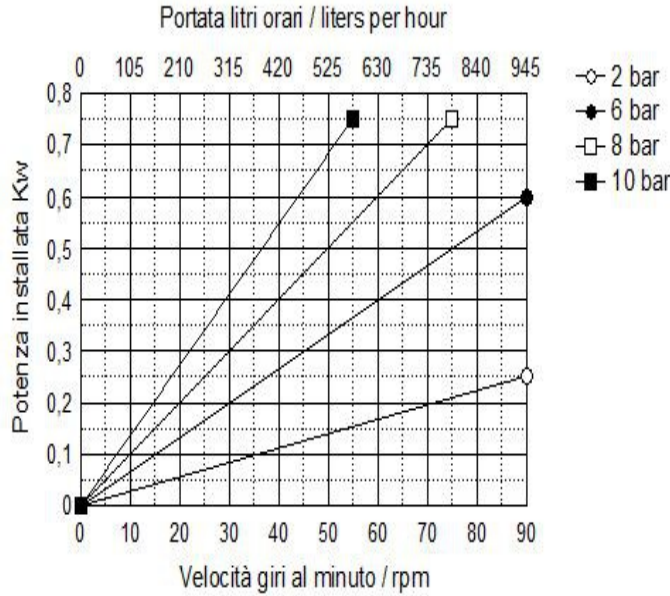


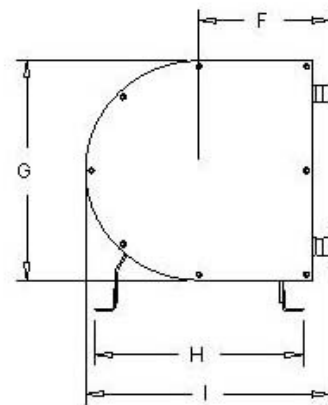
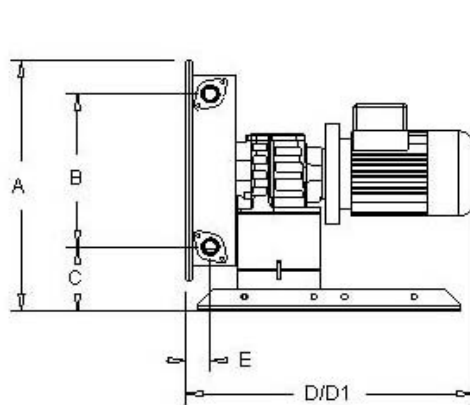
**Hose Carrier HCP**



TECHNICAL DATA	
Delivery max	945 l/hour
Head max*	10 bar
Vacuum	0,95 bar
Delivery per revolution	0,175 liter
Barb hose	DN 25
Free passage	20 mm
Weight	
Power Kw	0,18-0,75
Hose fiber reinforced available in different materials	NR
	NBR
	HYP
	EPDM
	NRA
Leakage sensor	Option
Cooling device	Option
Different connections	Option

VERSIONS AVAILABLE
Variables with mechanical speed variator, from 1:5
Variables with electronic inverter integrated IP 65
Trailers for slow hand towing in site
Electrical control panels aboard the machine

Note: in the presence of fluids particularly viscous, suspensions coarse solid, high delivery pressure, high temperatures, consider operate not more than 30 % of the maximum flow rate of the pump.  
 \*According to the transmission applied.



DIMENSIONS											
A	B	C	D	D1(VAR)	E	F	G	H	I	Out/In	Weight
355	216	90	393	540	33	178	310	284	334	DN25	

The dimensions are not binding and can vary without notice